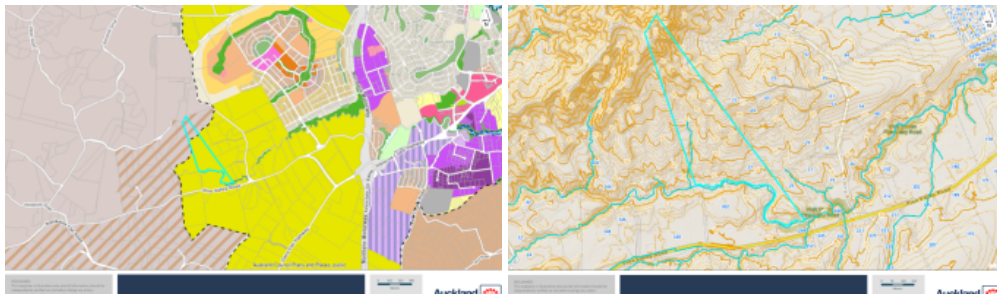




27 Young Access Road, Dairy Flat



## Future Urban Land | Dual Frontages

Positioned in one of Auckland's most rapidly evolving corridors, this exceptional landholding presents a rare opportunity to secure Future Urban zoned land with dual road frontages and significant long-term upside.

Spanning two titles across both Young Access Road and Pine Valley Road, the properties offer flexibility, scale, and strategic positioning plus multiple incomes within a high-growth precinct earmarked for future development.

Currently with multiple rental dwellings, providing immediate holding income.

Whether you're a land banker, developer, or strategic investor, this is a blue-chip opportunity to capitalise on Auckland's continued expansion. Located within a rapid rezoning zone, the property is

4 1 191,484 m<sup>2</sup>

|                      |                        |
|----------------------|------------------------|
| <b>Price</b>         | Contact Agent          |
| <b>Property Type</b> | Residential            |
| <b>Property ID</b>   | 785                    |
| <b>Land Area</b>     | 191,484 m <sup>2</sup> |

### Agent Details

Matty Ma - +64 21 287 4278

### Office Details

Mars Realty  
 Suite 3 227A Dairy Flat  
 Highway Albany, Auckland City,  
 AUK, 0632 New Zealand  
 09 448 5299



perfectly placed to benefit from future infrastructure, population growth, and urban intensification.

Opportunities of this scale and positioning are increasingly rare. Secure your foothold in one of Auckland's most promising future urban precincts and unlock the potential ahead.

Contact us today for further information. **Matty Ma 021 287 4278**

The above information provided has been furnished to us by the vendor/s. We have not verified whether or not that information is accurate and do not have any belief in one way or the other in its accuracy. We do not accept any responsibility to any person for its accuracy and do no more than pass it on. All interested parties should make and rely upon their own inquiries in order to determine whether or not this information is in fact accurate.