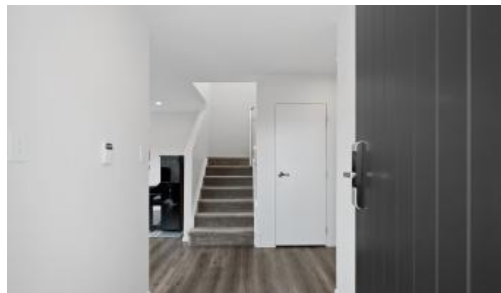


Just Listed



25A Athena Drive, Totara Vale



## Refined Modern Living with Exceptional Layout

Discover a sophisticated, near-new residence that combines contemporary luxury, family comfort, and smart investment value in one of the North Shore's most convenient neighbourhoods - Totara Vale.

This beautifully appointed home features four spacious bedrooms, a dedicated study, and 3.5 bathrooms, including two master suites with ensuites, offering exceptional flexibility for families, guests, or professionals working from home. The intelligent layout balances privacy with warm, open living spaces perfect for both everyday life and entertaining.

At the heart of the home is a stunning main kitchen complemented by a fully equipped Butler's Pantry, ideal for serious cooks, hosting, and keeping the main living area elegant and uncluttered. Finished

 4  3  1  257 m2

**Price** Price By  
Negotiation

**Property Type** Residential

**Property ID** 769

**Land Area** 257 m2

**Floor Area** 182 m2

### Inspection Times

Sun 15 Feb, 12:00 PM - 12:30 PM

Sat 21 Feb, 12:00 PM - 12:30 PM

Sun 22 Feb, 12:00 PM - 12:30 PM

to a high specification, the home showcases quality appliances, modern finishes, and low-maintenance construction, delivering both lifestyle comfort and long-term peace of mind.

With a freehold title, ownership is secure and straightforward. Positioned in the popular Totara Vale community, the property enjoys excellent access to transport, shopping centers, and well-regarded schools, with easy commuting throughout the North Shore and into Auckland CBD - making it highly attractive to owner-occupiers and tenants alike.

Whether you are searching for a refined family sanctuary or a high-performing investment, this property presents a rare opportunity to secure modern living with strong market appeal and immediate livability.

Act quickly - premium homes in this location are tightly held and highly sought after.

Call Eric Rong on 021 988 838 today for your appointment or visit the open homes

The above information provided has been furnished to us by the vendor/s. We have not verified whether or not that information is accurate and do not have any belief in one way or the other in its accuracy. We do not accept any responsibility to any person for its accuracy and do no more than pass it on. All interested parties should make and rely upon their own inquiries in order to determine whether or not this information is in fact accurate.

## Agent Details

Eric Rong - +64 21 988 838

## Office Details

Mars Realty

Suite 3 227A Dairy Flat

Highway Albany, Auckland City,

AUK, 0632 New Zealand

09 448 5299

