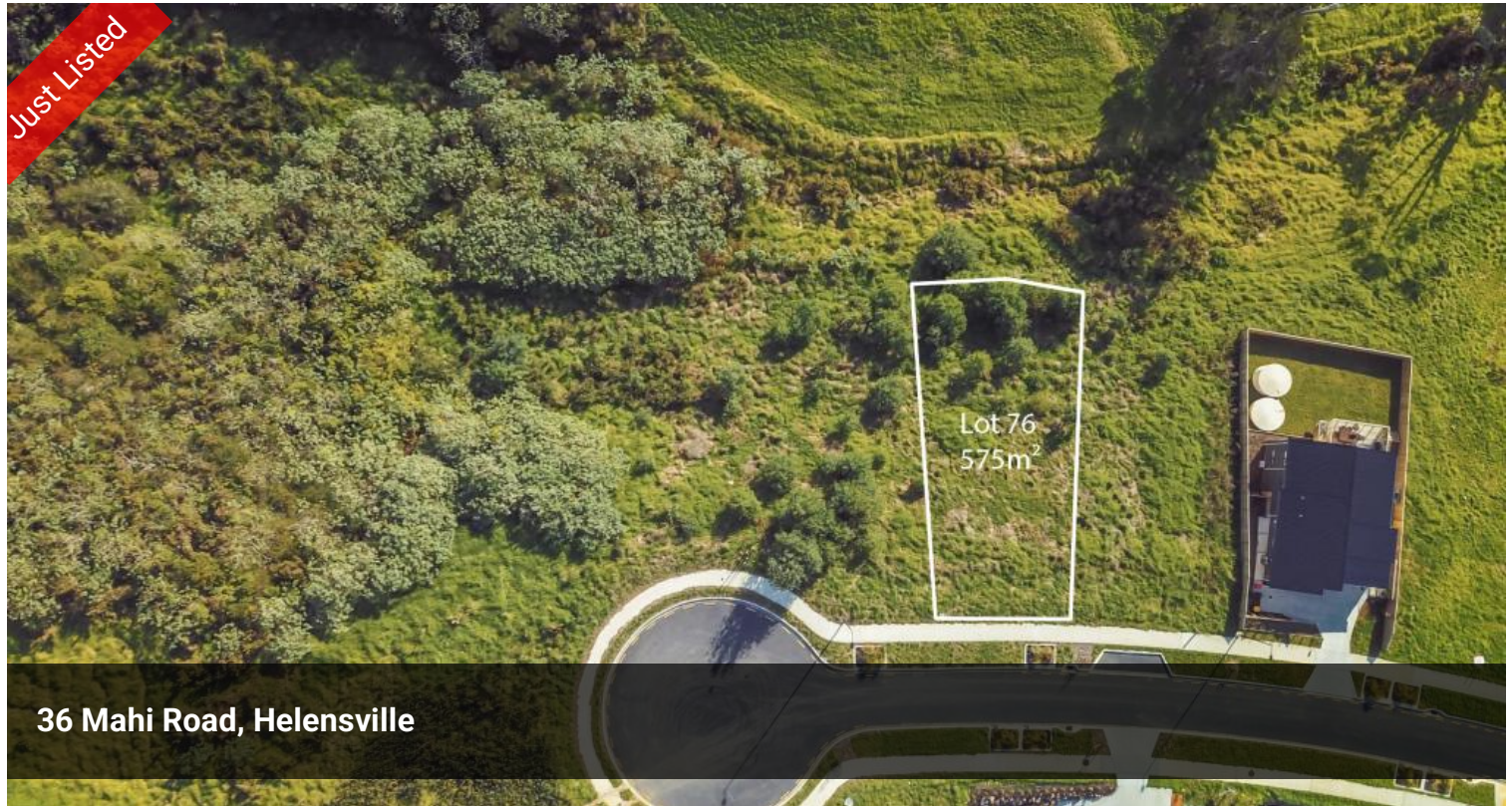


Just Listed



36 Mahi Road, Helensville



## Spend Less, Live More "Parkview" - Affordable New Subdivision in Helensville

Family-friendly and affordable lifestyle sections are now available for purchase. Titles have been issued! The Parkview subdivision has seen great success in its first three stages-secure your spot in this exciting new community.

### Lot 76

This site offers elevation with a greenery view to the west. Tucked away in a cul-de-sac, it provides a peaceful setting where children can safely gather and play.

Just a 20-minute walk to Helensville Village, and located directly opposite the scenic Rautawhiri Park, this community is perfect for families. The park features excellent amenities: a skate and scooter park, dog exercise area, outdoor fitness equipment, soccer

575 m2

**Price** Price on Application

**Property Type** Residential

**Property ID** 737

**Land Area** 575 m2

### Agent Details

Greg Antona - +64 21 775 287

### Office Details

Mars Realty

Suite 3 227A Dairy Flat

Highway Albany, Auckland City,

AUK, 0632 New Zealand

09 448 5299



and rugby fields, tennis and netball courts-plenty to enjoy for an active lifestyle.



The fast-growing Helensville community is a smart choice for those seeking the convenience and charm of country living. With just a 30-minute drive to Westgate or Silverdale, and easy access to public transport, everything you need is within reach. From vibrant community groups to local shopping and schooling options, Helensville has it all.

Make your move and secure your lifestyle today.

The above information provided has been furnished to us by the vendor/s. We have not verified whether or not that information is accurate and do not have any belief in one way or the other in its accuracy. We do not accept any responsibility to any person for its accuracy and do no more than pass it on. All interested parties should make and rely upon their own inquiries in order to determine whether or not this information is in fact accurate.