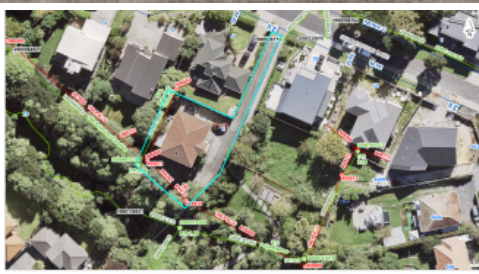
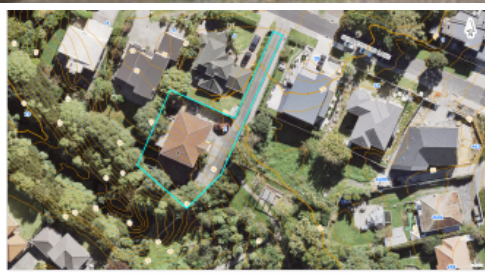


Sold



2 Summerfield Lane, Albany



Secluded Serenity: Prime Development

Discover an enticing opportunity to acquire a promising development property nestled in Albany. Positioned discreetly within a secure enclave and accessed via a sealed driveway, this 729m² (more or less) plot of land offers a tranquil retreat bordered by lush gardens and trees. The property exudes serenity, while its advantageous topography, as indicated by the council's GIS data, promises cost-effective development.

All essential services are already in place, inviting you to collaborate with your town planner and architect to craft a vision in this highly coveted locale, conveniently close to amenities.

Adjacent to Albany Primary School and within walking distance of Albany Junior High School and Albany Senior High Schools, the location is ideal.

The main residence boasts six bedrooms, two lounges, and three

8 4 7 729 m²

Price	SOLD
Property Type	Residential
Property ID	618
Land Area	729 m ²
Floor Area	306 m ²

Agent Details

Greg Antona - +64 21 775 287

Matty Ma - +64 21 287 4278

Office Details

Mars Realty

Suite 3 227A Dairy Flat

Highway Albany, Auckland City,

AUK, 0632 New Zealand

09 448 5299



bathrooms, while an additional income unit features two bedrooms, one lounge, and one bathroom, spread out over a large floor area 306m2 *Auckland Council . Perfect for homeowners seeking supplemental income or savvy investors looking to capitalize on land value.



Contact your agent promptly to schedule a viewing appointment. The scarcity of new housing options in central Albany underscores the desirability and potential of this offering.

Matty Ma 021 287 4278 mattyma18@gmail.com

Greg Antona 021 775 287 gregantona.mars@gmail.com

The above information provided has been furnished to us by the vendor/s. We have not verified whether or not that information is accurate and do not have any belief in one way or the other in its accuracy. We do not accept any responsibility to any person for its accuracy and do no more than pass it on. All interested parties should make and rely upon their own inquiries in order to determine whether or not this information is in fact accurate.