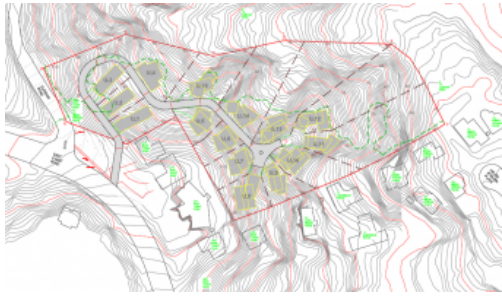




Torbay



Landbank For The Future

Freehold Section 1.765 Hectares (more or less), with possible subdivision in the future. (PC78). * Design is illustrative only.

This is a fantastic location overlooking the North Shore towards the rear of the section that backs on Glenvar Road, and situated at the intersection of East Coast Road. Local Beaches include Waiake and Browns Bay, Albany is located a few minutes drive and easy access to motorway and park n ride.

Zoned for popular schools including Glamorgan School, Northcross Intermediate and Long Bay college.

Contact Bill now for more information!

Bill Zhou

021 689 876

Bill.zhou@marsrealty.co.nz

1.77 ha

Price By Negotiation

Property Type Residential

Property ID 451

Land Area 1.77 ha

Agent Details

Michael Ma - +64 21 686 031

Office Details

Mars Realty

Suite 3 227A Dairy Flat

Highway Albany, Auckland City,

AUK, 0632 New Zealand

09 448 5299



whether or not that information is accurate and do not have any belief in one way or the other in its accuracy. We do not accept any responsibility to any person for its accuracy and do no more than pass it on. All interested parties should make and rely upon their own inquiries in order to determine whether or not this information is in fact accurate.