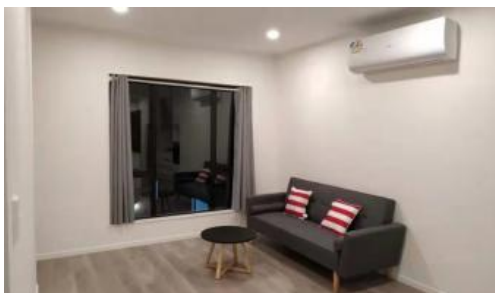


Sold

32 Waihou Crescent, Albany



## STAND OUT OF THE CROWD

Sparkling Brand New Homes off plan. Constructed by Master Building Company with 10 years Master Building Guarantee.

Urban Eden neighbourhood has been clearly designed to incorporate the nature of Urban living in a bold and bright concept.

Proposed building plan - Building type E7 which contains 2 Storeys, 5 Bedrooms and 2 Carparks. Land area of 164m<sup>2</sup> with building area 179m<sup>2</sup>.

Affordable, FREEHOLD titles and NO body corporate FEES.  
Possible weekly rental \$800 - \$880pw.

Location perfect for young couples, investors and family.

The fantastic new neighbourhood to great childcare, college and

 5  3  2  164 m<sup>2</sup>

<b>Price</b>	SOLD
<b>Property Type</b>	Residential
<b>Property ID</b>	44
<b>Land Area</b>	164 m <sup>2</sup>

### Agent Details

Matty Ma - +64 21 287 4278

### Office Details

Mars Realty  
Suite 3 227A Dairy Flat  
Highway Albany, Auckland City,  
AUK, 0632 New Zealand  
09 448 5299



university (Massey University). Albany shopping and leisure centre nearby, easy access to local community sports & leisure centre, tennis clubs and activity parks.

This is a FIRST to cater to the growing demands of buyers and help them achieve their dreams - Choose from the variety including home and land packages, land only packages, new built homes, and rent to buy options within 18 months available.

Completion date December 2019.

New funding approved for a new link road between Gills Road and Oteha Valley Road, with estimated start in December this year and improvements to cycleways, walkways, and playgrounds will benefit the central convenience on your property.

Details of the new link road can be found here:

<https://at.govt.nz/projects-roadworks/albany-developments/medallion-drive-link/>

Moving in to enjoy the Xmas!

Call Matty Ma on 021 287 4278 from Mars Realty for your chance to own.

The above information provided has been furnished to us by the vendor/s. We have not verified whether or not that information is accurate and do not have any belief in one way or the other in its accuracy. We do not accept any responsibility to any person for its accuracy and do no more than pass it on. All interested parties should make and rely upon their own inquiries in order to determine whether or not this information is in fact accurate.