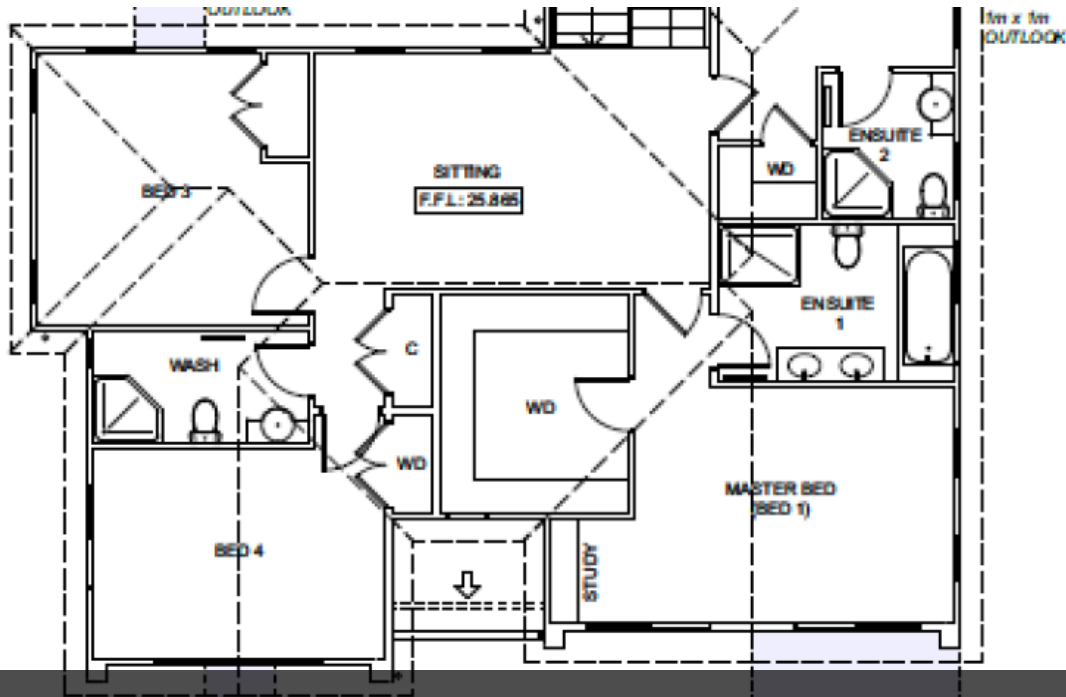
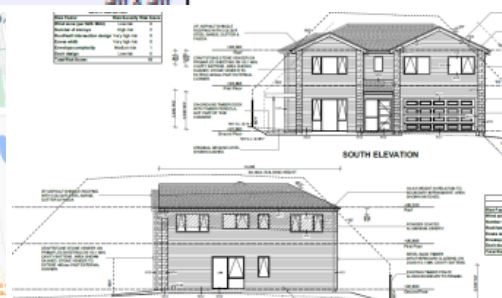
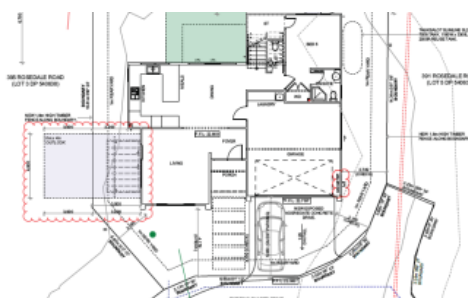


Sold



393 Rosedale Road, Albany



## Building Just Started

Beautifully positioned and brand new home concept for 5 bedroom family home with three living areas.

Relax and enjoy the convenience of lock up home, with three separate living areas and internal double access garage.

This home is situated in a fantastic central location in Albany opposite Kristin School, 10 minute drive to Albany Shopping Center.

Bring the lifestyle closer to you with this great investment. Act quickly this one wont stay long.

The above information provided has been furnished to us by the vendor/s. We have not verified whether or not that information is accurate and do not have any belief in one way or the other in its accuracy. We do not accept any responsibility to any person for its accuracy and do no more than pass it on. All interested parties should make and rely upon their own inquiries in order to determine whether or not this information is in fact accurate.

5 4 2 354 m2

**Price** SOLD  
**Property Type** Residential  
**Property ID** 184  
**Land Area** 354 m2

### Agent Details

Matty Ma - +64 21 287 4278

### Office Details

Mars Realty  
Suite 3 227A Dairy Flat  
Highway Albany, Auckland City,  
AUK, 0632 New Zealand  
09 448 5299

