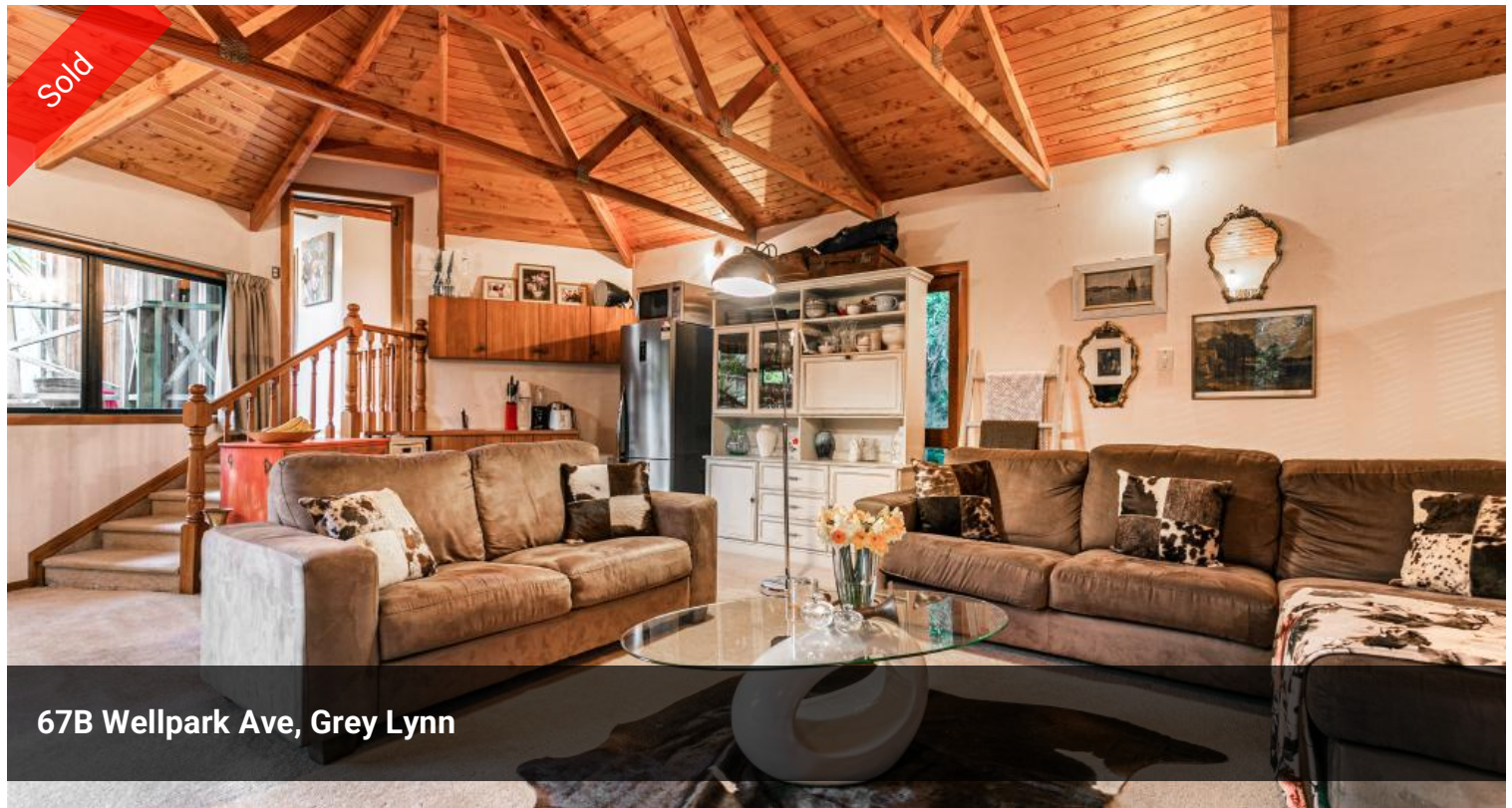


Sold



67B Wellpark Ave, Grey Lynn



926m2 mixed housing urban zoned land in Westmere

Situated in this sought-after Grey Lynn suburb, the location alone makes it worthy of investment. A freehold title with the land size 926m2 (more or less) in the Residential - Mixed Housing Urban Zone provides a great development opportunity for all savvy developers and land bankers or a family now, with an eye to the future.

On offer, you have 5 bedrooms, 2 bathrooms and 3 off street carparks. This splendid home has got the space and tropical garden for family living inside and out.

From the bird-song morning to the glorious sunset evening, surrounding mature trees provides you retreat like, peaceful living - a perfect place for "Zen" or Yoga. And ideal for your family or an evening party in this beautiful summer.

 5  2  926 m2

Price	SOLD
Property Type	Residential
Property ID	17
Land Area	926 m2

Agent Details

Matty Ma - +64 21 287 4278

Evan Cui - +64 27 971 1968

Office Details

Mars Realty

Suite 3 227A Dairy Flat

Highway Albany, Auckland City,
AUK, 0632 New Zealand

09 448 5299



Cedar and weatherboard cladding, well-appointed kitchen and dining, polished timber floor throughout and decks on both levels create seamless indoor-outdoor flow, this unique character home offers so much.

School zoned for Westmere Primary, Western Springs College both within walking distance.

Located in central Grey Lynn, next to Western Springs and Auckland Zoo, Cocks Bay, Ponsonby, Herne Bay, St. Mary's Bay with handy access to the Motorway and public transport, only about 10 minutes drive to Auckland CBD, plenty of cafes, bars, restaurants and shopping areas all around for your convenience.

Services on site too, simply invest or nest or develop new.

Feasibility report and concept plans are available upon request.

2017 RV \$2,475,000.

The above information provided has been furnished to us by the vendor/s. We have not verified whether or not that information is accurate and do not have any belief in one way or the other in its accuracy. We do not accept any responsibility to any person for its accuracy and do no more than pass it on. All interested parties should make and rely upon their own inquiries in order to determine whether or not this information is in fact accurate.